

TM 11-6625-2975-24P

TECHNICAL MANUAL

**ORGANIZATIONAL, DIRECT SUPPORT, AND GENERAL
SUPPORT MAINTENANCE REPAIR PARTS AND
SPECIAL TOOLS LISTS**

**FOR
TEST SET, RECEIVER AN/ARM-180
(NSN 6625-01-041-4161)**

HEADQUARTERS, DEPARTMENT OF THE ARMY

19 JULY 1984

Technical Manual }
No. 11-6625-2975-24P }

HEADQUARTERS
DEPARTMENT OF THE ARMY
Washington, DC, 19 July 1984

**ORGANIZATIONAL, DIRECT SUPPORT, AND GENERAL SUPPORT MAINTENANCE
REPAIR PARTS AND SPECIAL TOOLS LIST**

**FOR
TEST SET, RECEIVER
AN/ARM-180 (NSN 6625-01-041-4161)**

Current as of 3 April 1984

REPORTING ERRORS AND RECOMMENDING IMPROVEMENTS

You can help improve this manual. If you find any mistakes or if you know of a way to improve the procedures, please let us know. Mail your letter, DA Form 2028 (Recommended Changes to Publications and Blank Forms) or DA Form 2028-2 located in the back of this manual direct to: Commander, US Army Communications-Electronics Command and Fort Monmouth, ATTN: DRSEL-ME-MP, Fort Monmouth, New Jersey 07703-5007. A reply will be furnished direct to you.

TABLE OF CONTENTS

	Page	Illus Figure
Section I. Introduction	1	
II. Repair Parts List	5	
Group 00 Test Set VOR/ILS AN/ARM-180	5	1
01 Front Panel Assembly A1	9	2
02 Controller Audio Assembly A2 (No parts authorized)		
03 RF Modulator Assembly A3 (No parts authorized)		
04 Synthesizer Assembly A4 (No parts authorized)		
05 Power Supply Assembly A5 (No parts authorized)		
Section III. Special Tools List	13	3
IV. National Stock Number and Part Number Index	14	

*This manual supersedes so much of TM 11-6625-2975-14&P, 30 December 1980, as pertains to Parts List, Section VI.

SECTION I

INTRODUCTION

1. Scope

This manual lists spares and repair parts; special tools; special test, measurement, and diagnostic equipment (TMDE), and other special support equipment required for performance of organizational, direct support, and general support maintenance of the AN/ARM-180. It authorizes requisitioning and issue of spares and repair parts as indicated by the source and maintenance codes.

2. General

This Repair Parts and Special Tools List is divided into the following sections:

a. Section II. Repair Parts List. A list of spares and repair parts authorized for use in the performance of maintenance. The list also includes parts which must be removed for replacement of the authorized parts. Parts lists are composed of functional groups in numeric sequence, with the parts in each group listed in figure and item number sequence.

b. Section III. Special Tools Lists. A list of special tools, special TMDE, and other special support equipment authorized for the performance of maintenance.

c. Section IV. National Stock Number and Part Number Index. A list, in National item identification number (NIIN) sequence, of all National stock numbers (NSN) appearing in the listings, followed by a list, in alphameric sequence, of all part numbers appearing in the listings. National stock numbers and part numbers are cross-referenced to each illustration figure and item number appearance.

3. Explanation of Columns

a. Illustration. This column is divided as follows:

(1) *Figure number.* Indicates the figure number of the illustration on which the item is shown.

(2) *Item number.* The number used to identify item called out in the illustration.

b. Source, Maintenance, and Recoverability (SMR) Codes.

(1) *Source code.* Source codes indicate the manner of acquiring support items for maintenance, repair, or overhaul of end items. Source codes are entered in the first and second positions of the Uniform SMR Code format as follows:

<i>Code</i>	<i>Definition</i>
PA	—Item procured and stocked for anticipated or known usage.
PE	—Support equipment procured and stocked for initial issue or outfitting to specified maintenance repair activities.
XB	—Item is not procured or stocked. If not available through salvage, requisition.

NOTE

Cannibalization or salvage may be used as a source of supply for any items source coded above except those coded XA and aircraft support items as restricted by AR 750-1.

(2) *Maintenance code.* Maintenance codes are assigned to indicate the levels of maintenance authorized to USE and REPAIR support items. The maintenance codes are entered in the third and fourth positions of the Uniform SMR Code format as follows:

(a) The maintenance code entered in the third position will indicate the lowest maintenance level authorized to remove, replace, and use the support item. The maintenance code entered in the third position will indicate one of the following levels of maintenance:

<i>Code</i>	<i>Application/Explanation</i>
O	— Support item is removed, replaced, used at the organizational level.
H	— Support item is removed, replaced, used at the general support level.

(b) The maintenance code entered in the fourth position indicates whether the item is to be

repaired and identifies the lowest maintenance level with the capability to perform complete repair (i.e., all authorized maintenance functions). This position will contain one of the following maintenance codes:

<i>Code</i>	<i>Application/Explanation</i>
H—	The lowest maintenance level capable of complete repair of the support item is the general support level.
D—	The lowest maintenance level capable of complete repair of the support item is the depot level.
Z—	Nonreparable. No repair is authorized.

(3). *Recoverability Code*. Recoverability codes are assigned to support items to indicate the disposition action on unserviceable items. The recoverability code is entered in the fifth position of the Uniform SMR Code format as follows:

<i>Recoverability Code</i>	<i>Definition</i>
N—	Nonreparable item. When unserviceable, condemn and dispose at the level indicated in position 3.
H—	Reparable item. When uneconomically reparable, condemn and dispose at the general support level.
D—	Reparable item. When beyond lower level repair capability, return to depot. Condemnation and disposal not authorized below depot level.
A—	Item requires special handling or condemnation procedures because of specific reasons (i. e., precious metal content, high dollar value, critical material or hazardous material). Refer to appropriate manuals/directives for specific instructions.

c. *National Stock Number*. Indicates the National stock number assigned to the item and will be used for requisitioning purposes.

d. *Federal Supply Code for Manufacturer (FSCA4)*. The FSCM is a 5-digit numeric code listed in SB 708-41 /42 which is used to identify the manufacturer, distributor, or Government agency, etc.

e. *Part Number*. Indicates the primary number used by the manufacturer (individual, company, firm, corporation, or Government activity), which controls the design and characteristics of the item by means of its engineering drawings, specifications, standards, and inspection requirements to identify an item or range of items.

NOTE

When a stock numbered item is requisitioned, the repair part received may have a different part number than the part being replaced.

f. *Description*. Indicates the Federal item name and, if required, a minimum description to identify the item. In the Special Tools List, the initial basis of issue (BOI) appears as the last line in the entry for each special tool, special TM DE, and other special support equipment. When density of equipments supported exceeds density spread indicated in the basis of issue, the total authorization is increased accordingly.

g. *Unit of Measure (U/M)*. Indicates the standard of the basic quantity of the listed item as used in performing the actual maintenance function. This measure is expressed by a two-character alphabetical abbreviation (e.g., ea, in, pr, etc). When the unit of measure differs from the unit of issue, the lowest unit of issue that will satisfy the required units of measure will be requisitioned.

h. *Quantity Incorporated in Unit*. Indicates the quantity of the item used in the breakout shown on the illustration figure, which is prepared for a functional group, subfunctional group, or an assembly.

4. Special Information

a. The following publication pertains to the AN/ARM-180 and its components:

- TM 11-6625-2975-12, Test Set, Receiver AN/ARM-180
- TM 11-6625-2975-40, Test Set, Receiver AN/ARM-180

b. National stock numbers (NSN'S) that are missing from P source coded items have been applied for and will be added to this TM by future

change/revision when they are entered in the Army Master Data File (AMDF). Until the NSN'S are established and published, submit exception requisitions to Commander, US Army Communications-Electronics Command and Fort Monmouth, ATTN: DRSEL-MM, Fort Monmouth, NJ 07703-5006 for the part required to support your equipment.

5. How to Locate Repair Parts

a. When National stock number or part number is unknown.

(1) *First.* Using the table of contents, determine the functional group within which the item belongs. This is necessary since illustrations are prepared for functional groups and listings are divided into the same groups.

(2) *Second.* Find the illustration covering the functional group to which the item belongs.

(3) *Third.* Identify the item on the illustration and note the illustration figure and item number of the item.

(4) *Fourth.* Using the Repair Parts Listing, find the figure and item number noted on the illustration.

b. When National stock number or part number is known.

(1) *First.* Using the Index of National Stock Numbers and Part Numbers, find the pertinent National stock number or part number. This index is in NIIN sequence followed by a list of part numbers in alphameric sequence, cross-referenced to the illustration figure number and item number.

(2) *Second.* After finding the figure and item number, locate the figure and item number in the repair parts list.

6. Abbreviations

Not applicable.

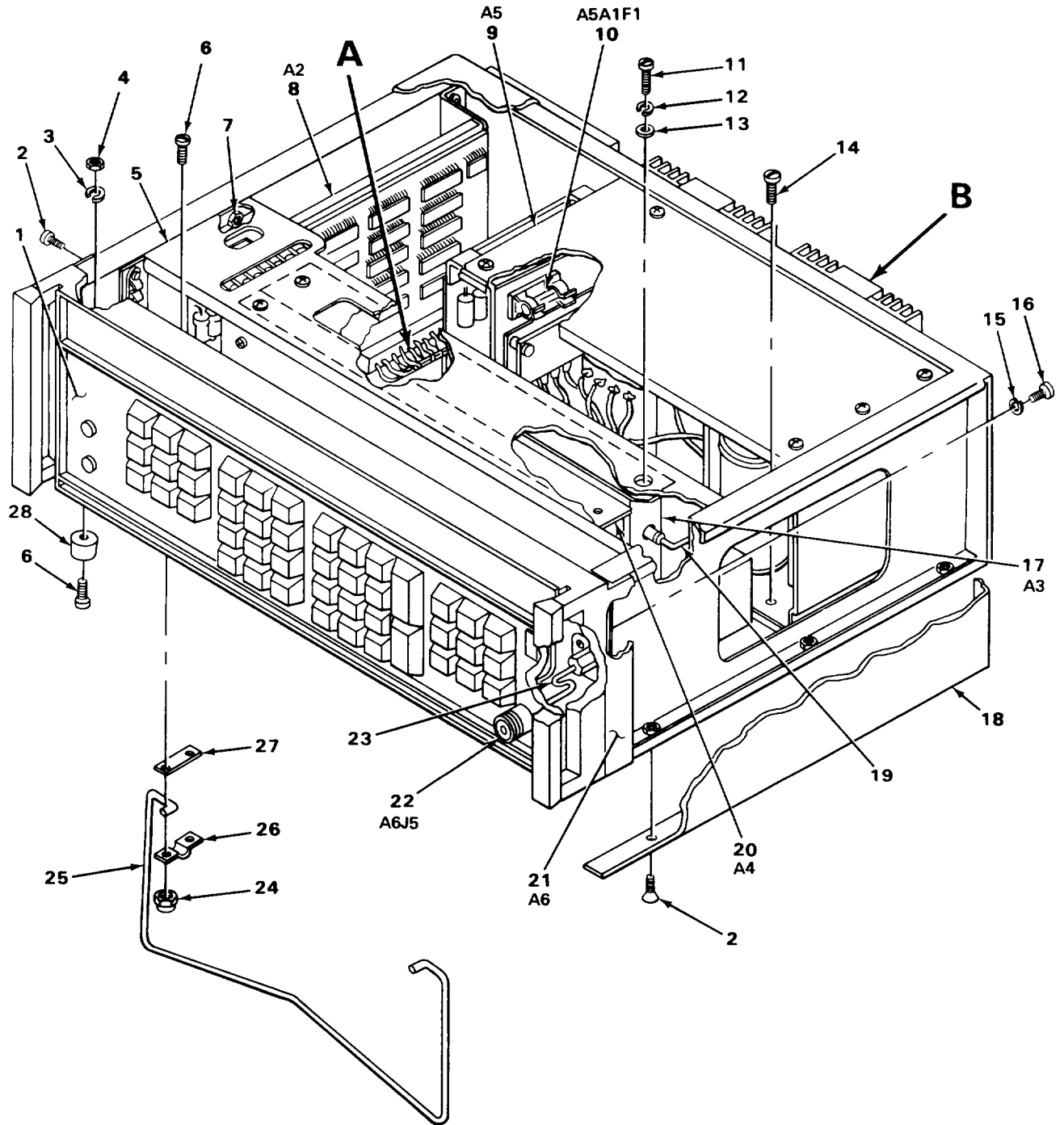
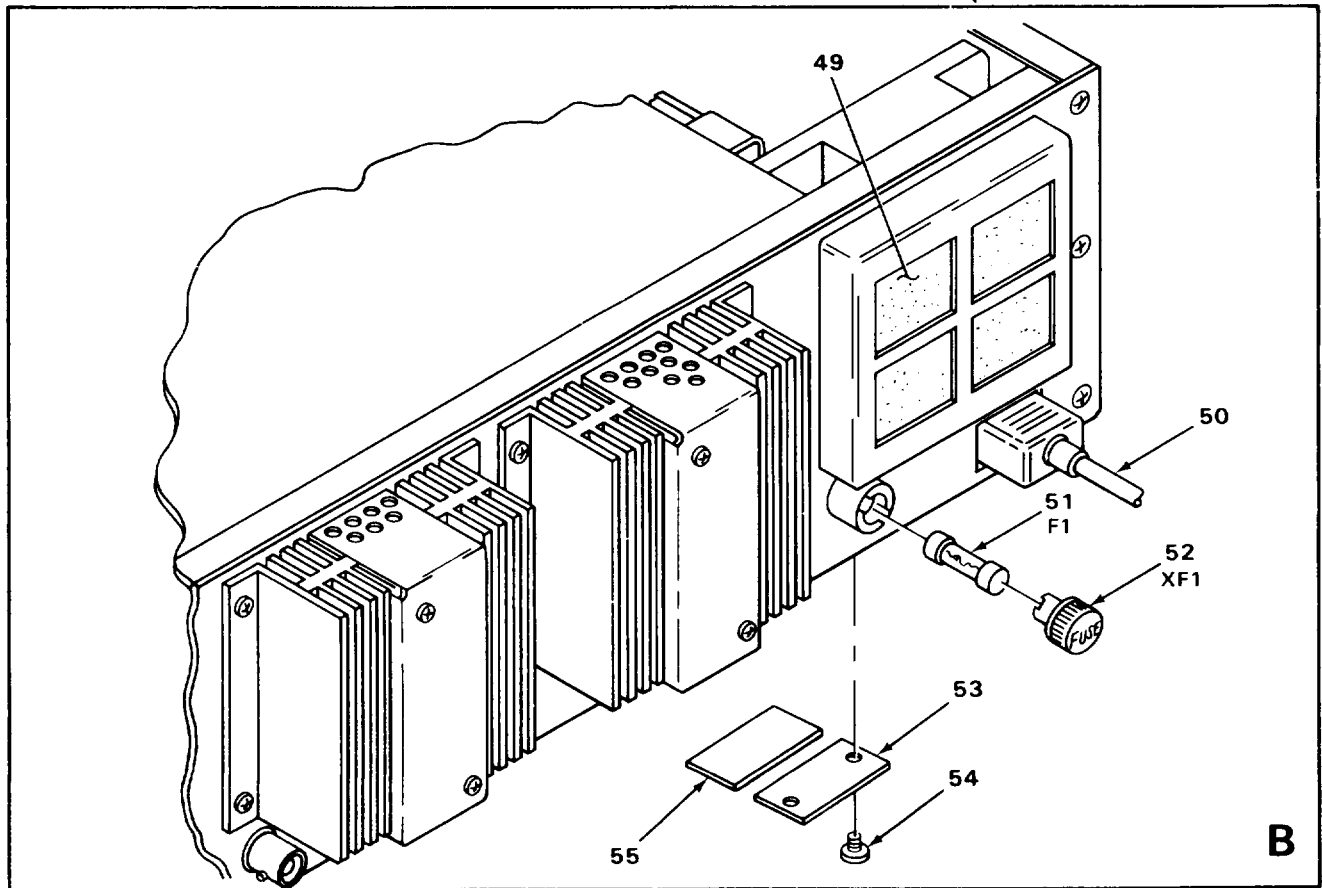
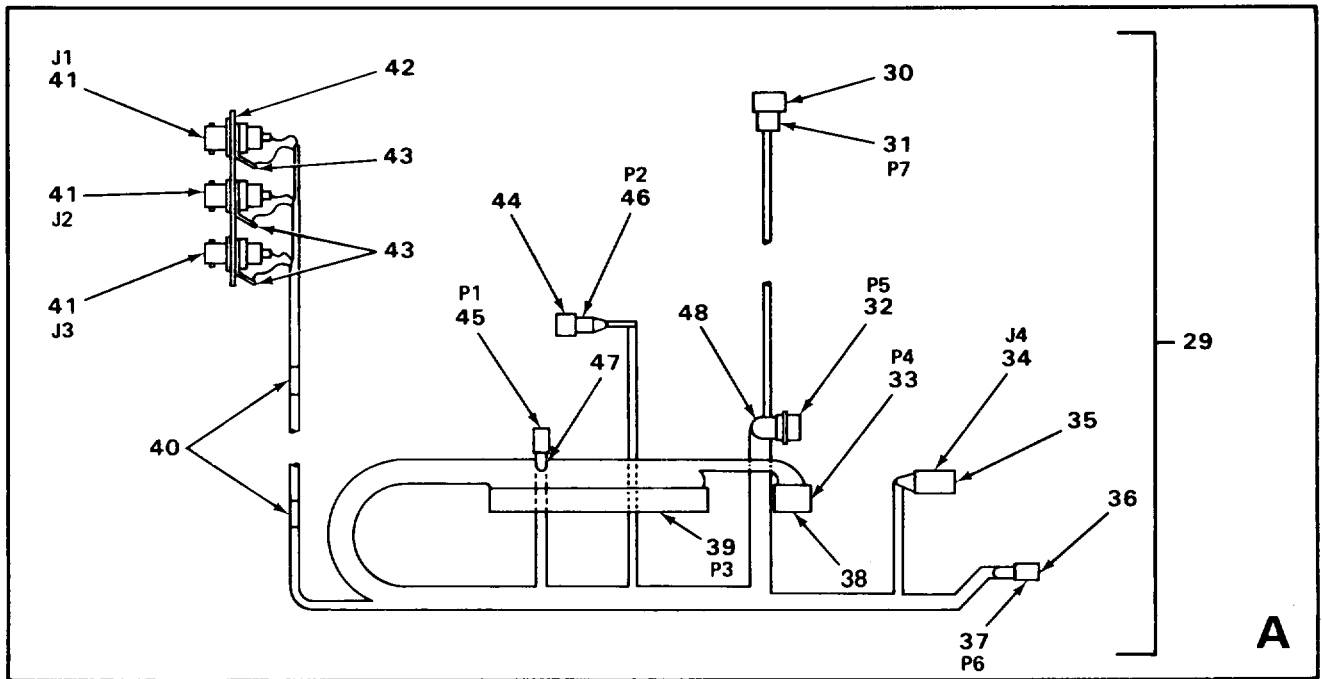


FIGURE 1. TEST SET VOR/ILS AN/ARM-180 (SHEET 1 OF 2).



EL9MD004

FIGURE 1. TEST SET VOR/ILS AN/ARM-180 (SHEET 2 OF 2).

SECTION II REPAIR PARTS LIST		TM11-6625-2975-24P						(7)	(8)
(1) ILLUS- TRATION (A) FIG NO	(2) (B) ITEM NO	(3) SMR CODE NATIONAL STOCK NUMBER	(4) FSCM	(5) PART NUMBER	(6)	USABLE ON CODE	U\M	QTY INC IN UNIT	
					GROUP 00 TEST SET VOR/ILS AN/ARM-180				
1	1	XBHDD	13499	629-9730-001	FRONT PANEL ASSEMBLY (SEE FIGURE 2 FOR BREAKDOWN)		EA	1	
1	2	PAHZZ	5305-00-054-6651	96906 MS51957-27	SCREW, MACHINE		EA	8	
1	3	PAHZZ	5310-00-929-6395	96906 MS35338-136	WASHER, LOCK		EA	4	
1	4	PAHZZ	5310-00-616-8660	18876 9052346	NUT, PLAIN, HEXAGON		EA	4	
1	5	XBHZZ		13499 629-9738-001	BRACKET, MODULE		EA	1	
1	6	PAHZZ	5305-00-770-2579	96906 MS51959-15	SCREW, MACHINE		EA	8	
1	7	PAHZZ	5310-00-866-3506	72962 F12NCFMA2-62	NUT, SELF-LOCKING, CL		EA	4	
1	8	PAHDA	6625-01-085-5656	13499 629-9740-001	CIRCUIT CARD ASSEMB		EA	1	
1	9	PAHDA	6130-01-085-7315	13499 629-9770-001	POWER SUPPLY		EA	1	
1	10	PAHZZ	5920-00-280-4960	81349 F02A250V4AS	. FUSE		EA	1	
1	11	PAHZZ	5305-00-054-6677	96906 MS51957-52	SCREW, MACHINE		EA	4	
1	12	PAHZZ	5310-00-933-8119	96906 MS35338-137	WASHER, LOCK		EA	4	
1	13	PAHZZ	5310-00-225-5328	96906 MS15795-841	WASHER, FLAT		EA	4	
1	14	PAHZZ	5305-00-763-6962	96906 MS51959-27	SCREW, MACHINE		EA	4	
1	15	PAHZZ	5310-00-933-8120	96906 MS35338-138	WASHER, LOCK		EA	4	
1	16	PAHZZ	5305-00-059-3659	96906 MS51958-63	SCREW, MACHINE		EA	4	
1	17	PAHDA	6625-01-085-5657	13499 629-9750-001	CIRCUIT CARD ASSEMB		EA	1	
1	18	XBHZZ		13499 629-9747-001	COVER, TOP		EA	1	
1	19	XBHZZ		13499 629-9782-001	CABLE ASSEMBLY, RADI		EA	1	
1	20	PAHDA	6625-01-085-7346	13499 629-9760-001	SYNTHESIZER, ELECTRI		EA	1	
1	21	XBHHH		13499 629-9780-001	CHASSIS ASSEMBLY		EA	1	
1	22	XBHZZ		91836 KN19-154M06	CONNECTOR, JACK		EA	1	
1	23	XBHZZ		13499 629-9781-001	CABLE ASSEMBLY, RADI		EA	1	
1	24	PAHZZ	5310-00-857-5548	96906 MS21044D04	NUT, SELF-LOCKING, HE		EA	4	
1	25	XBHZZ		13499 629-9783-001	BAIL, SUPPORT		EA	1	
1	26	XBHZZ		13499 629-9886-001	CLAMP, BAIL		EA	2	
1	27	XBHZZ		13499 629-9885-001	PLATE, SPACER		EA	2	
1	28	PAHZZ	5340-00-282-3720	70485 827S	BUMPER, RUBBER		EA	4	

SECTION II		TM11-6625-2975-24P						
(1)	(2)	(3)	(4)	(5)	(6)		(7)	(8)
ILLUS- TRATION (A)	SMR CODE	NATIONAL STOCK NUMBER	FSCM	PART NUMBER	DESCRIPTION	USABLE ON CODE	U\M	QTY INC IN UNIT
FIG NO	(B) ITEM NO							
1	29	XBHHH	13499	629-9775-001	WIRING HARNESS ASSY		EA	1
1	30	XBHZZ	27264	1854TL	.PIN, CONTACT		EA	8
1	31	PAHZZ	5935-01-018-7275	27264	03-06-2092		EA	1
1	32	PAHZZ	5935-00-493-0465	81349	M24308/1-5		EA	1
1	33	XBHZZ	13499	629-9776-003	.CONNECTOR		EA	1
1	34	PAHZZ	5935-00-174-5742	27264	03-06-1061		EA	1
1	35	XBHZZ	27264	1561TL	.PIN, .CONTACT		EA	4
1	36	PAHZZ	5999-00-764-1923	37695	168993-2		EA	120
1	37	XBHZZ	13499	629-9776-002	.CONNECTOR		EA	1
1	38	PAHZZ	5999-00-007-2050	13499	372-2255-020		EA	19
1	39	XBHZZ	13499	372-2626-038	.CONNECTOR, BODY, RECE		EA	1
1	40	PAHZZ	5340-00-619-7754	09922	HP39		EA	2
1	41	PAHZZ	5935-00-835-0510	81349	M39012-21-0001		EA	3
1	42	XBHZZ	13499	629-9780-001	.PLATE		EA	1
1	43	PAHZZ	5940-00-903-5951	94375	0167-3		EA	3
1	44	XBHZZ	27264	1560TL	.PIN, .CONTACT		EA	4
1	45	XBHZZ	13499	629-9776-001	.CONNECTOR		EA	1
1	46	PAHZZ	5935-00-309-8502	27264	1625-6P1		EA	1
1	47	XBHZZ	22526	65048-023	.PLUG, KEYING		EA	1
1	48	PAHZZ	5340-00-905-2740	71468	DD51223-1		EA	1
1	49	PAHZZ	4130-01-076-8630	13499	629-9779-001		EA	1
1	50	PAOZZ	6150-01-004-8773	28480	8120-1348		EA	1
1	51	PAOZZ	5920-00-281-0210	81349	F02A250V4AS		EA	1
1	51	PAOZZ	5920-00-280-4960	81349	F02A250V2A		EA	1
1	52	PAHZZ	5920-00-864-6622	13499	265-1171-000		EA	1
1	53	XBHZZ	13499	635-1837-000	PLATE, IDENTIFICATIO		EA	1
1	54	PAHZZ	5305-00-054-5636	96906	MS51957-2		EA	2
1	55	XBHZZ	13499	609-3929-001	PLATE, MODIFIED		EA	1

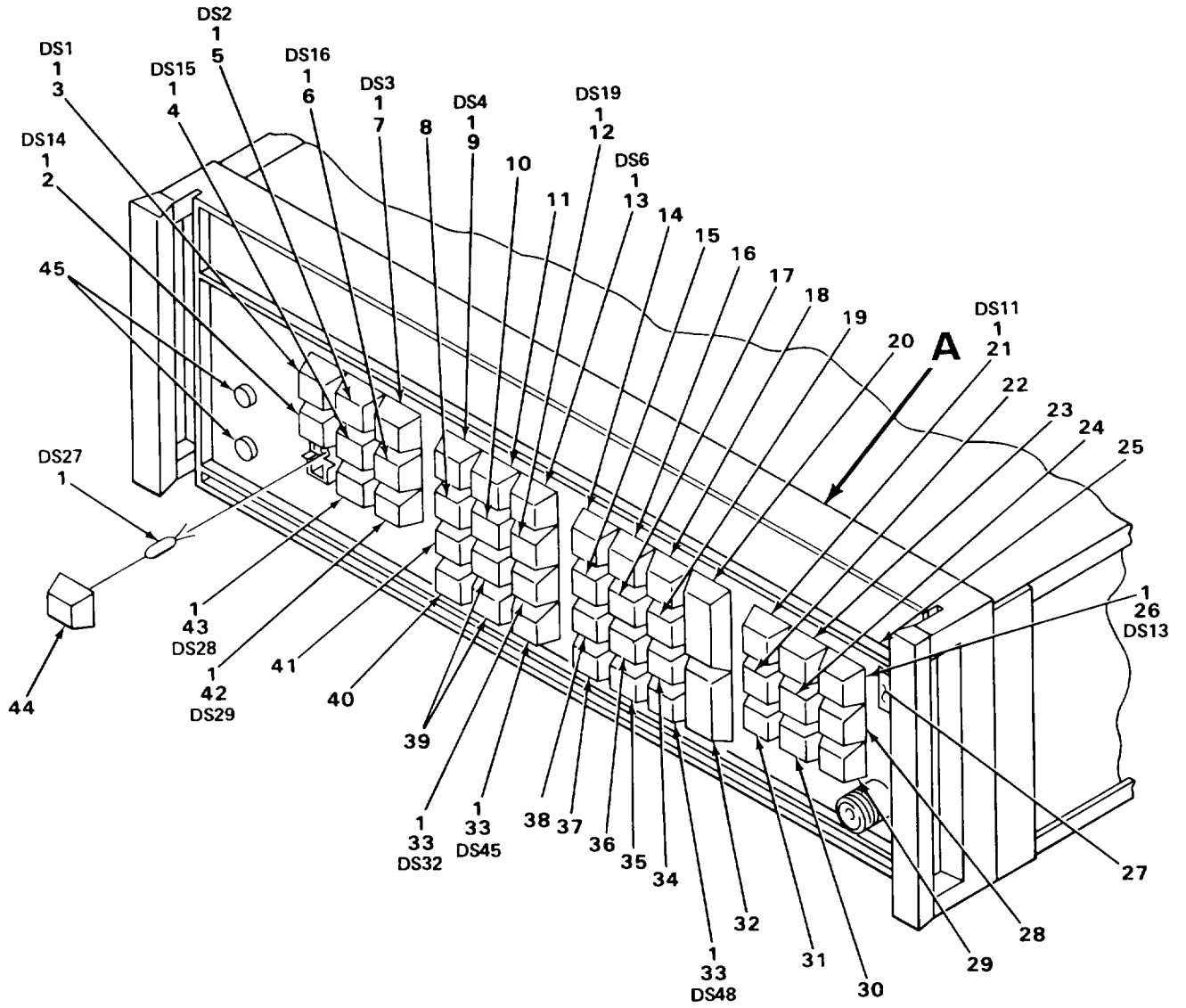
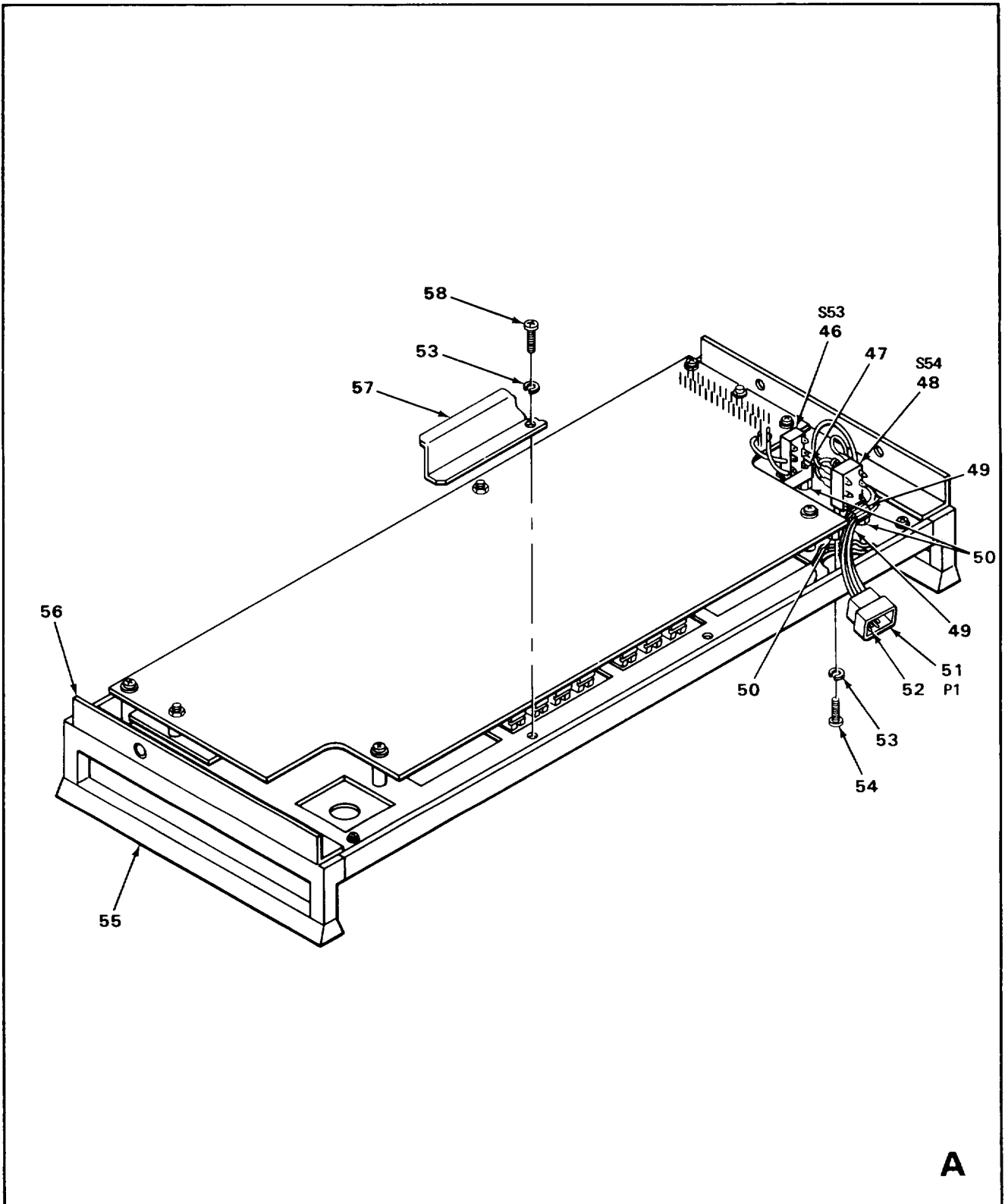


FIGURE 2. FRONT PANEL ASSEMBLY A1 (SHEET 1 OF 2).

EL9MD002

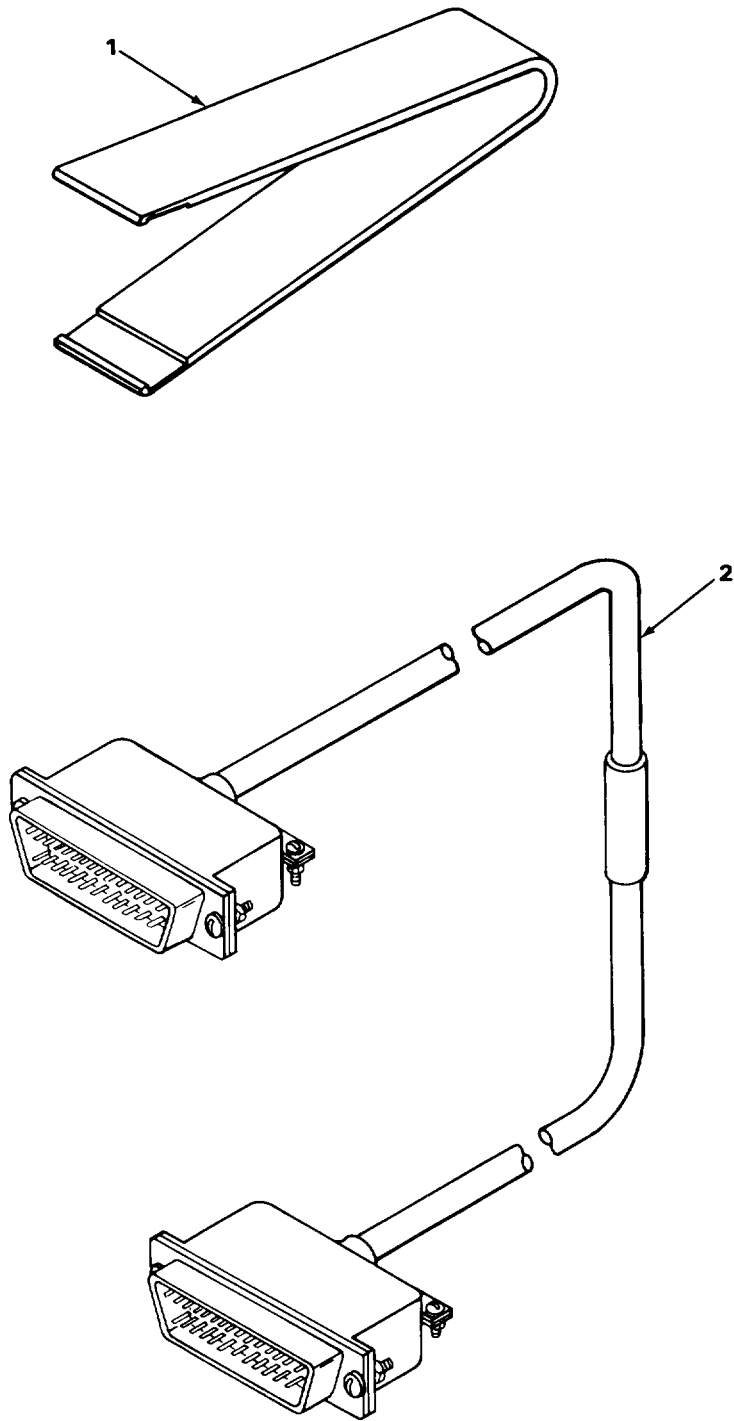


EL9MD003

FIGURE 2. FRONT PANEL ASSEMBLY A1 (SHEET 2 OF 2).

SECTION II (1) ILLUS- TRATION (A) FIG NO		(2) SMR CODE	(3) NATIONAL STOCK NUMBER	TM11-6625-2975-24P (4) (5) FSCM PART NUMBER		(6) DESCRIPTION	USABLE ON CODE	(7) U\M	(8) QTY INC IN UNIT
GROUP 01 FRONT PANEL ASSEMBLY A1									
2	1	PAOZZ	6240-00-179-5043	87034	66	LAMP, INCANDESCENT		EA	17
2	2	PAOZZ	6210-01-069-9009	13499	629-9745-027	LENS, SWITCH ACTUATI		EA	1
2	3	PAOZZ	6210-01-069-9012	13499	629-9745-030	LENS, SWITCH ACTUATI		EA	1
2	4	PAOZZ	6210-01-069-9008	13499	629-9745-026	LENS, SWITCH ACTUATI		EA	1
2	5	PAOZZ	6210-00-069-9011	13499	629-9745-029	LENS, SWITCH ACTUATI		EA	1
2	6	PAOZZ	6210-00-069-9007	13499	629-9745-025	LENS, SWITCH ACTUATI		EA	1
2	7	PAOZZ	6210-00-069-9010	13499	629-9745-028	LENS, SWITCH ACTUATI		EA	1
2	8	PAOZZ	6210-00-069-8998	13499	629-9745-014	LENS, SWITCH ACTUATI		EA	1
2	9	PAOZZ	6210-00-069-8995	13499	629-9745-011	LENS, SWITCH ACTUATI		EA	1
2	10	PAOZZ	6210-00-069-8999	13499	629-9745-015	LENS, SWITCH ACTUATI		EA	1
2	11	PAOZZ	6210-00-069-8996	13499	629-9745-012	LENS, SWITCH ACTUATI		EA	1
2	12	PAOZZ	6210-00-069-9000	13499	629-9745-016	LENS, SWITCH ACTUATI		EA	1
2	13	PAOZZ	6210-00-069-8997	13499	629-9745-013	LENS, SWITCH ACTUATI		EA	1
2	14	PAOZZ	6210-01-070-2479	13499	629-9978-008	LENS, SWITCH ACTUATI		EA	1
2	15	PAOZZ	6210-01-070-2476	13499	629-9978-005	LENS, SWITCH ACTUATI		EA	1
2	16	PAOZZ	6210-01-070-2480	13499	629-9978-009	LENS, SWITCH ACTUATI		EA	1
2	17	PAOZZ	6210-01-070-2477	13499	629-9978-006	LENS, SWITCH ACTUATI		EA	1
2	18	PAOZZ	6210-01-070-3382	13499	629-9978-010	LENS, SWITCH ACTUATI		EA	1
2	19	PAOZZ	6210-01-070-2478	13499	629-9978-007	LENS, SWITCH ACTUATI		EA	1
2	20	PAOZZ	6210-01-070-0112	13499	629-9968-001	LENS, LIGHT		EA	1
2	21	PAOZZ	6210-01-069-8986	13499	629-9745-001	LENS, SWITCH ACTUATI		EA	1
2	22	PAOZZ	6210-01-069-8989	13499	629-9745-004	LENS, SWITCH ACTUATI		EA	1
2	23	PAOZZ	6210-01-069-8987	13499	629-9745-002	LENS, SWITCH ACTUATI		EA	1
2	24	PAOZZ	6210-01-069-8990	13499	629-9745-005	LENS, SWITCH ACTUATI		EA	1
2	25	XBHZZ		13499	635-9615-001	SUPPORT, PANEL		EA	1
2	26	PAOZZ	6210-01-069-8988	13499	629-9745-003	LENS, SWITCH ACTUATI		EA	1
2	27	PAHZZ	5355-01-077-3196	13499	629-9675-001	WINDOW, DIAL		EA	1
2	28	PAOZZ	6210-01-069-8991	13499	629-9745-006	LENS, SWITCH ACTUATI		EA	1

SECTION II		TM11-6625-2975-24P							
(1)	(2)	(3)	(4)	(5)	(6)		(7)	(8)	
ILLUS- TRATION (A) FIG NO	(B) ITEM NO	SMR CODE	NATIONAL STOCK NUMBER	FSCM	PART NUMBER	DESCRIPTION	USABLE ON CODE	U\M INC IN UNIT	
2	29	PAOZZ	6210-01-069-8994	13499	629-9745-009	LENS, SWITCH ACTUATI		EA 1	
2	30	PAOZZ	6210-01-069-8993	13499	629-9745-008	LENS, SWITCH ACTUATI		EA 1	
2	31	PAOZZ	6210-01-069-8992	13499	629-9745-007	LENS, SWITCH ACTUATI		EA 1	
2	32	PAOZZ	6210-01-070-0113	13499	629-9768-002	LENS, LIGHT		EA 1	
2	33	XBOZZ		13499	266-7533-010	LENS, SWITCH ACTUATI		EA 3	
2	34	PAOZZ	6210-01-070-2475	13499	629-9978-004	LENS, SWITCH ACTUATI		EA 1	
2	35	PAOZZ	6210-01-069-9013	13499	629-9745-031	LENS, SWITCH ACTUATI		EA 1	
2	36	PAOZZ	6210-01-069-2474	13499	629-9978-003	LENS, SWITCH ACTUATI		EA 1	
2	37	PAOZZ	6210-01-070-2472	13499	629-9978-001	LENS, SWITCH ACTUATI		EA 1	
2	38	PAOZZ	6210-01-070-2473	13499	629-9978-002	LENS, SWITCH ACTUATI		EA 1	
2	39	PAOZZ	6210-01-069-9002	13499	629-9745-018	LENS, SWITCH ACTUATI		EA 2	
2	40	PAOZZ	6210-01-069-9003	13499	629-9745-020	LENS, SWITCH ACTUATI		EA 1	
2	41	PAOZZ	6210-01-069-9001	13499	629-9745-017	LENS, SWITCH ACTUATI		EA 1	
2	42	PAOZZ	6210-01-069-9004	13499	629-9745-022	LENS, SWITCH ACTUATI		EA 1	
2	43	PAOZZ	6210-01-069-9005	13499	629-9745-023	LENS, SWITCH ACTUATI		EA 1	
2	44	PAOZZ	6210-01-069-9006	13499	629-9745-024	LENS, SWITCH ACTUATI		EA 1	
2	45	XBHZZ		13499	266-7508-260	BUTTON, PUSH		EA 2	
2	46	XBHZZ		13499	266-7508-090	SWITCH, PUSH		EA 1	
2	47	XBHZZ		31918	01-0003-00	SWITCH, PUSH		EA 1	
2	48	XBHZZ		31918	NE15F01-0003-00	SWITCH, PUSH		EA 1	
2	49	PAHZZ	5975-00-727-5153	96906	MS3367-4-9	STRAP, TIEDOWN, ELECT		EA 2	
2	50	PAHZZ	5820-00-086-8724	13499	540-9002-003	POST, ELECTRICAL-MEC		EA 4	
2	51	PAHZZ	5935-00-309-8502	27264	1625-6P1	CONNECTOR BODY, PLUG		EA 1	
2	52	XBHZZ		27264	1560-TL	PIN, CONTACT		EA 4	
2	53	PAHZZ	5310-00-928-2690	96906	MS35338-134	WASHER, LOCK		EA 8	
2	54	PAHZZ	5305-00-054-5636	96906	MS51957-2	SCREW, MACHINE		EA 4	
2	55	PAHZZ	6625-01-087-8279	13499	629-9731-004	FLANGE, CHASSIS HAND		EA 2	
2	56	XBHZZ		13499	629-9733-004	BRACKET, ANGLE		EA 2	
2	57	XBHZZ		13499	629-9613-001	BRACKET, ANGLE		EA 1	
2	58	PAHZZ	5305-00-054-5648	96906	MS51957-14	SCREW, MACHINE		EA 4	



EL9MD005

FIGURE 3. SPECIAL TOOLS.

SECTION III SPECIAL TOOLS		TM11-6625-2975-24P							
(1) ILLUS- TRATION (A) FIG NO	(B) ITEM NO	(2) SMR CODE	(3) NATIONAL STOCK NUMBER	(4) FSCM	(5) PART NUMBER	(6)	USABLE ON CODE	(7) U\M	(8) QTY INC IN UNIT
SPECIAL TOOLS									
3	1	PAOZZ	5999-01-084-6839	13499	638-2280-001	EXTRACTOR, ELECTRICAL (BOI:1 AUTHORIZED PER EQUIPMENT)		EA	1
3	2	PEHZZ		80058	MX-10577/ ARM-180	EXTENDER, TEST CABLE (BOI:1 AUTHORIZED FOR 1 TO 3 EQUIPMENTS)		EA	1

NATIONAL STOCK NUMBER AND PART NUMBER INDEX

NOTE: LATEST NATIONAL STOCK NUMBER AND PART NUMBER ASSIGNMENT ARE INCLUDED AT
END OF INDEX.

NATIONAL STOCK NUMBER	FIGURE NO	ITEM NO	NATIONAL STOCK NUMBER	FIGURE NO	ITEM NO
5999-00-007-2050	1	38	6210-01-069-9006	2	44
5305-00-054-5636	1	54	6210-01-069-9008	2	4
5305-00-054-5636	2	54	6210-01-069-9009	2	2
5305-00-054-5648	2	58	6210-01-069-9012	2	3
5305-00-054-6651	1	2	6210-01-069-9013	2	35
5305-00-054-6677	1	11	6210-01-070-0112	2	20
5305-00-059-3659	1	16	6210-01-070-0113	2	32
6210-00-069-8995	2	9	6210-01-070-2472	2	37
6210-00-069-8996	2	11	6210-01-070-2473	2	38
6210-00-069-8997	2	13	6210-01-070-2475	2	34
6210-00-069-8998	2	8	6210-01-070-2476	2	15
6210-00-069-8999	2	10	6210-01-070-2477	2	17
6210-00-069-9000	2	12	6210-01-070-2478	2	19
6210-00-069-9007	2	6	6210-01-070-2479	2	14
6210-00-069-9010	2	7	6210-01-070-2480	2	16
6210-00-069-9011	2	5	6210-01-070-3382	2	18
5820-00-086-8724	2	50	4130-01-076-8630	1	49
5935-00-174-5742	1	34	5355-01-077-3196	2	27
6240-00-179-5043	2	1	5999-01-084-6839	3	1
5310-00-225-5328	1	13	6625-01-085-5656	1	8
5920-00-280-4960	1	10	6625-01-085-5657	1	17
5920-00-280-4960	1	51	6130-01-085-7315	1	9
5920-00-281-0210	1	51	6625-01-085-7346	1	20
5340-00-282-3720	1	28	6625-01-087-8279	2	55
5935-00-309-8502	1	46			
5935-00-309-8502	2	51			
5935-00-493-0465	1	32			
5310-00-616-8660	1	4			
5340-00-619-7754	1	40			
5975-00-727-5153	2	49			
5305-00-763-6962	1	14			
5999-00-764-1923	1	36			
5305-00-770-2579	1	6			
5935-00-835-0510	1	41			
5310-00-857-5548	1	24			
5920-00-864-6622	1	52			
5310-00-866-3506	1	7			
5940-00-903-5951	1	43			
5340-00-905-2740	1	48			
5310-00-928-2690	2	53			
5310-00-929-6395	1	3			
5310-00-933-8119	1	12			
5310-00-933-8120	1	15			
6150-01-004-8773	1	50			
5935-01-018-7275	1	31			
6210-01-069-2474	2	36			
6210-01-069-8986	2	21			
6210-01-069-8987	2	23			
6210-01-069-8988	2	26			
6210-01-069-8989	2	22			
6210-01-069-8990	2	24			
6210-01-069-8991	2	28			
6210-01-069-8992	2	31			
6210-01-069-8993	2	30			
6210-01-069-8994	2	29			
6210-01-069-9001	2	41			
6210-01-069-9002	2	39			
6210-01-069-9003	2	40			
6210-01-069-9004	2	42			
6210-01-069-9005	2	43			

NATIONAL STOCK NUMBER AND PART NUMBER INDEX

FSCM	PART NUMBER	NATIONAL STOCK NUMBER	FIGURE NO	ITEM NO	FSCM	PART NUMBER	NATIONAL STOCK NUMBER	FIGURE NO	ITEM NO
71468	DD51223-1	5340-00-905-2740	1	48	13499	629-9745-011	6210-00-069-8995	2	9
81349	F02A250V2A	5920-00-280-4960	1	51	13499	629-9745-012	6210-00-069-8996	2	11
81349	F02A250V4AS	5920-00-280-4960	1	10	13499	629-9745-013	6210-00-069-8997	2	13
81349	F02A250V4AS	5920-00-281-0210	1	51	13499	629-9745-014	6210-00-069-8998	2	8
72962	F12NCFMA2-62	5310-00-866-3506	1	7	13499	629-9745-015	6210-00-069-8999	2	10
09922	HP39	5340-00-619-7754	1	40	13499	629-9745-016	6210-00-069-9000	2	12
91836	KN19-154M06		1	22	13499	629-9745-017	6210-01-069-9001	2	41
96906	MS15795-841	5310-00-225-5328	1	13	13499	629-9745-018	6210-01-069-9002	2	39
96906	MS21044D04	5310-00-857-5548	1	24	13499	629-9745-020	6210-01-069-9003	2	40
96906	MS3367-4-9	5975-00-727-5153	2	49	13499	629-9745-022	6210-01-069-9004	2	42
96906	MS35338-134	5310-00-928-2690	2	53	13499	629-9745-023	6210-01-069-9005	2	43
96906	MS35338-136	5310-00-929-6395	1	3	13499	629-9745-024	6210-01-069-9006	2	44
96906	MS35338-137	5310-00-933-8119	1	12	13499	629-9745-025	6210-00-069-9007	2	5
96906	MS35338-138	5310-00-933-8120	1	15	13499	629-9745-026	6210-01-069-9008	2	4
96906	MS51957-14	5305-00-054-5648	2	58	13499	629-9745-027	6210-01-069-9009	2	2
96906	MS51957-2	5305-00-054-5636	1	54	13499	629-9745-028	6210-00-069-9010	2	7
96906	MS51957-2	5305-00-054-5636	2	54	13499	629-9745-029	6210-00-069-9011	2	5
96906	MS51957-27	5305-00-054-6651	1	2	13499	629-9745-030	6210-01-069-9012	2	3
96906	MS51957-52	5305-00-054-6677	1	11	13499	629-9745-031	6210-01-069-9013	2	35
96906	MS51958-63	5305-00-059-3659	1	16	13499	629-9747-001		1	18
96906	MS51959-15	5305-00-770-2579	1	6	13499	629-9750-001	6625-01-085-5657	1	17
96906	MS51959-27	5305-00-763-6962	1	14	13499	629-9760-001	6625-01-085-7346	1	20
81349	M24308/1-5	5935-00-493-0465	1	32	13499	629-9768-002	6210-01-070-0113	2	32
81349	M39012-21-0001	5935-00-835-0510	1	41	13499	629-9770-001		1	9
31918	NE15F01-0003-00		2	48	13499	629-9775-001	6130-01-085-7315	1	29
31918	01-0003-00		2	47	13499	629-9776-001		1	45
94375	0167-3	5940-00-903-5951	1	43	13499	629-9776-002		1	37
					13499	629-9776-003		1	33
27264	03-06-1061	5935-00-174-5742	1	34	13499	629-9779-001	4130-01-076-8630	1	49
27264	03-06-2092	5935-01-018-7275	1	31	13499	629-9780-001		1	21
27264	1560-TL		2	52	13499	629-9780-001		1	42
27264	1560TL		1	44	13499	629-9781-001		1	23
27264	1561TL		1	35	13499	629-9782-001		1	19
27264	1625-6P1	5935-00-309-8502	1	46	13499	629-9783-001		1	25
27264	1625-6P1	5935-00-309-8502	2	51	13499	629-9885-001		1	27
37695	168993-2	5999-00-764-1923	1	36	13499	629-9886-001		1	26
27264	1854TL		1	30	13499	629-9968-001	6210-01-070-0112	2	20
13499	265-1171-000	5920-00-864-6622	1	52	13499	629-9978-001	6210-01-070-2472	2	37
13499	266-7508-090		2	46	13499	629-9978-002	6210-01-070-2473	2	38
13499	266-7508-260		2	45	13499	629-9978-003	6210-01-069-2474	2	36
13499	372-2255-020	5999-00-007-2050	1	38	13499	629-9978-004	6210-01-070-2475	2	34
13499	372-2626-038		1	39	13499	629-9978-005	6210-01-070-2476	2	15
13499	540-9002-003	5820-00-086-8724	2	50	13499	629-9978-006	6210-01-070-2477	2	17
13499	609-3929-001		1	55	13499	629-9978-007	6210-01-070-2478	2	19
13499	629-9613-001		2	57	13499	629-9978-008	6210-01-070-2479	2	14
13499	629-9675-001	5355-01-077-3196	2	27	13499	629-9978-009	6210-01-070-2480	2	16
13499	629-9730-001		1	1	13499	629-9978-010	6210-01-070-3382	2	18
13499	629-9731-004	6625-01-087-8279	2	55					
13499	629-9733-004		2	56	13499	635-1837-000		1	53
13499	629-9738-001		1	5	13499	635-9615-001		2	25
13499	629-9740-001	6625-01-085-5656	1	8	13499	638-2280-001	5999-01-084-6839	3	1
13499	629-9745-001	6210-01-069-8986	2	21	22526	65048-023		1	47
13499	629-9745-002	6210-01-069-8987	2	23	87034	66	6240-00-179-5043	2	1
13499	629-9745-003	6210-01-069-8988	2	26	28480	8120-1348	6150-01-004-8773	1	50
13499	629-9745-004	6210-01-069-8989	2	22	70485	827S	5340-00-282-3720	1	28
13499	629-9745-005	6210-01-069-8990	2	24	18876	9052346	5310-00-616-8660	1	4
13499	629-9745-006	6210-01-069-8991	2	28					
13499	629-9745-007	6210-01-069-8992	2	31					
13499	629-9745-008	6210-01-069-8993	2	30					
13499	629-9745-009	6210-01-069-8994	2	29					
					13499	266-7533-010		2	33
					80058	MX-10577/ ARM-180		3	2

By Order of the Secretary of the Army:

JOHN A. WICKHAM JR.
General, United States Army
Chief of Staff

Official:

ROBERT M. JOYCE
Major General, United States Army
The Adjutant General

DISTRIBUTION:

To be distributed in accordance with DA Form 12-51A,
Organizational Maintenance requirements for AN/AR4-180.

* U. S. GOVERNMENT PRINTING OFFICE 1987 0 - 181-421 (70745)

RECOMMENDED CHANGES TO EQUIPMENT TECHNICAL PUBLICATIONS



THEN... JOT DOWN THE DOPE ABOUT IT ON THIS FORM. CAREFULLY TEAR IT OUT. FOLD IT AND DROP IT IN THE MAIL!

SOMETHING WRONG WITH THIS PUBLICATION?

FROM: (PRINT YOUR UNIT'S COMPLETE ADDRESS)

DATE SENT

PUBLICATION NUMBER

TM 11-6625-2975-24P

PUBLICATION DATE

19 July 1984

PUBLICATION TITLE

Test Set, Receiver AN/ARM-180

BE EXACT... PIN-POINT WHERE IT IS

PAGE
NO

PARA-
GRAPH

FIGURE
NO

TABLE
NO

IN THIS SPACE TELL WHAT IS WRONG AND WHAT SHOULD BE DONE ABOUT IT:

PRINTED NAME, GRADE OR TITLE, AND TELEPHONE NUMBER

SIGN HERE

FILL IN YOUR
UNIT'S ADDRESS

FOLD BACK

DEPARTMENT OF THE ARMY

POSTAGE AND FEES PAID
DEPARTMENT OF THE ARMY
DOD 314



OFFICIAL BUSINESS
PENALTY FOR PRIVATE USE \$300

Commander
US Army Communications-Electronics Command
and Fort Monmouth
ATTN: DRSEL-ME-MP
Fort Monmouth, New Jersey 07703-5007

TEAR ALONG PERFORATED LINE

